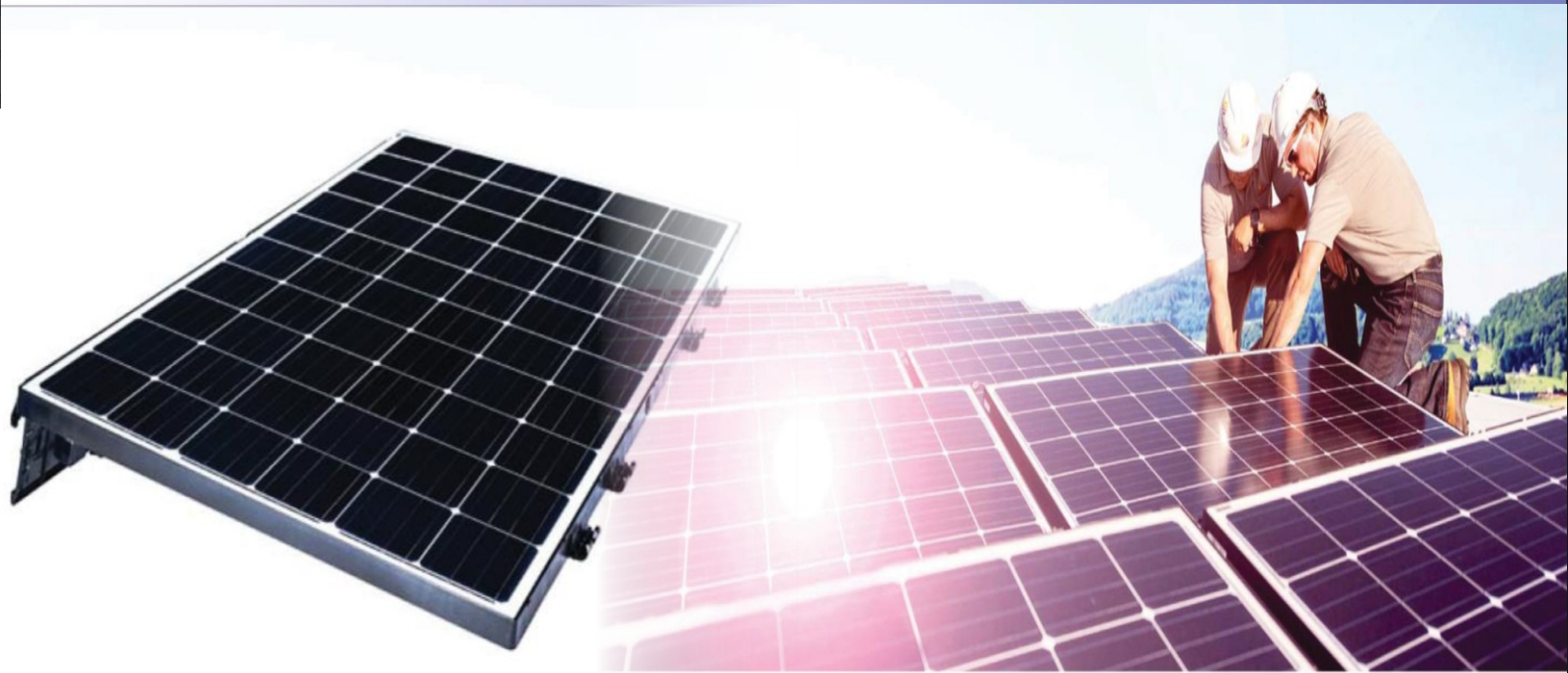


60 CELLS FAST INSTALL LIGHT WEIGHT PV SYSTEM



Electrical Properties (STC)

Model	KE325M	KE320M	KE315M	KE310M	KE305M	KE300M	KE295M	KE290M
Maximum power (Pmax)	325	320	315	310	305	300	295	290
MPP voltage (Vmpp)	33.8	33.7	33.3	33.1	32.9	32.7	32.5	32.2
MPP current (Impp)	9.64	9.55	9.46	9.37	9.28	9.19	9.08	9.01
Open circuit voltage (Voc)	41.1	40.8	40.5	40.2	40	39.8	39.6	38.9
Short circuit current (Isc)	9.97	9.96	10	9.94	9.85	9.77	9.68	9.66

Operating temperature (°C)	-40 to +85
Maximum system voltage (V)	1000 V
Maximum series fuse rating (A)	20
Power tolerance (W)	0 to +4.99
Efficiency reduction (from 1000W / m ² to 200W / m ²)	<3.5%

Mechanical Properties

Cells	60 Cells, 6 x 10 MONO PERC
Assembly dimensions (L x W x H)	1646mm x 1012mm x 48mm 64.8in x 39.8in x 1.9in
Weight with integrated racking system	17.24kg / 38lbs
Max load	Wind: 50 psf, 2400 Pa, front & back Snow: 112 psf, 5400 Pa, front

Certifications

UL/ IEC 61215, 61730-1-2, UL 2703, CE, CEC



More Energy Harvest

Higher energy output per panel, increasing solar — return on investment.



Faster Installation

The ultra-fast install process requires no tools and no grounding, leading to lower labor costs.



Higher Ground Cover Ratio 20% More Panels Per Roof

Sprint's innovative design allows you to pack more panels on a roof, increasing overall energy output.



60% Lighter

With a weight of 1.8 lbs/ft² (8.78 kg/m²), Sprint is much lighter than conventional solar systems.



Industry Standard Warranty

25 year linear output warranty and 10 year product warranty.

Temperature Ratings

NOCT	44°C ± 2 °C
Pmpp	-0.36% / °C
Voc	-0.36% / °C
Isc	0.06% / °C

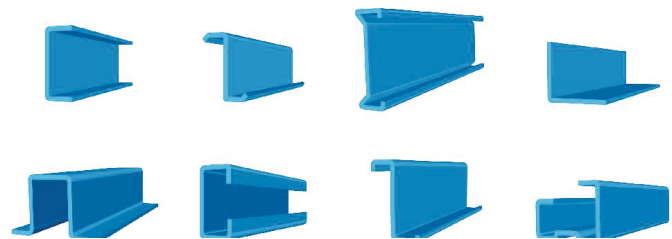
Kosol Module Mounting Structure



KOSOL Energie has in house module mounting manufacturing facility of 1.2GW/year capacity by using fully automatic production line with the speed of 15-20 Mts, 300mm max wider span, form multiples section & shapes. Kosol use the Gallium /Cold rolled steel / posco steel and HDGI with various grades materials

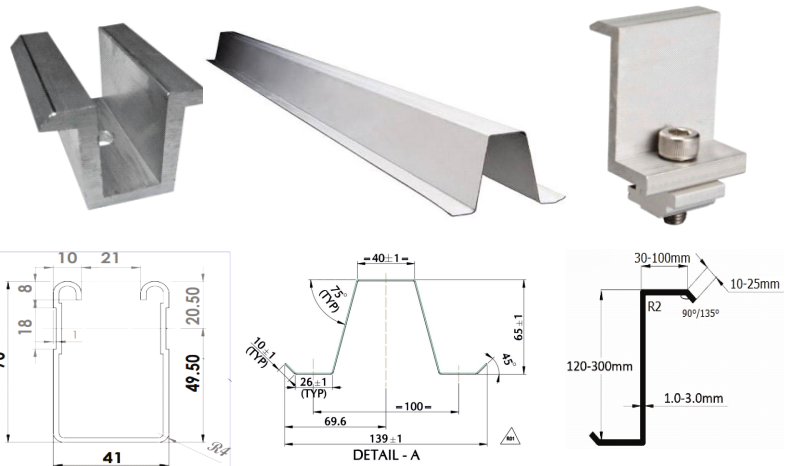
Applications

- Solar roof and ground mounted systems (residential, industrial, commercial, carport and solar agricultural pumps).
- Structural members for plane and space trusses.
- Frame less Stressed skin structures: Corrugated sheets or sheeting profiles with stiffened edges are used for small structures up to a 6 m clear span with no interior framework.



Salient Features

- More Mechanical Strength, more wind load & more cantilever withstand capacity with less weight per sqm.
- Lower LCOE 2% saving
- Hot-dip Galvanizing / Polyester Powder Coated steel surface treatment to ensures longer life
- Economy in transportation and shipping
- Flexibility and fast installation
- High strength to weight ratio



KOSOL ENERGIE

445 Hotel Cir S, San Diego, CA 92108, USA

Contact us : +1 619 400 6667

Warehouse: 46711 Fremont Blvd Fremont CA 94538 USA

Email: - globalsales@kosol.solar | dixan@sunray.solar

www.kosol.solar

The specifications are for reference purpose only.
KOSOL reserves the right to change the specifications without prior notice.