

# KOSOL Flexible Solar Module



## Walkable / Non-walkable

Kosol MultiWire / 5 BB technology resistant to step on immune to Microcracks. Low Light performance thin and light weight. Low Light performance thin and light weight. The power generation area of a conventional busbar design will be less effective due to cell cracks or breakage.



Special customized solutions



Multi-Wire/5 BB Solar Cell



Anti-PID Resistance



Higher power output



Ultra light-weight



Low temperature coefficient



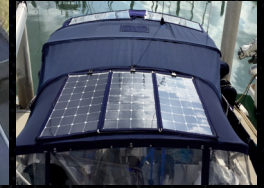
Extreme weather conditions



Higher lifetime power yield



Easily mounted with a number of assembly options



Model	KE335FL	KE330FL	KE315FL	KE310FL	KE305FL	KE300FL	KE255FL	KE250FL	KE245FL	KE235FL	KE230FL	KE225FL
Voc (V)	37.28	37.18	34.44	34.24	33.82	33.55	27.96	27.71	27.34	25.63	25.42	25.05
Vmp (V)	32.23	32.09	29.96	29.68	29.26	29.00	24.26	24.01	23.63	22.35	22.06	21.67
Imp (A)	10.41	10.36	10.54	10.50	10.46	10.41	10.52	10.49	10.41	10.56	10.52	10.46
Isc (A)	10.96	10.91	11.12	11.08	11.03	10.96	11.09	11.05	10.96	11.14	11.09	11.03
P (Watt)	335	330	315	310	305	300	255	250	245	235	230	225
Model	KE220FL	KE125FL	KE120FL	KE115FL	KE115FLS	KE110FL	KE110FLS	KE105FL	KE100FL	KE90FL	KE80FL	
Voc (V)	24.85	27.71	27.34	25.42	25.42	24.85	24.85	22.96	22.37	20.04	17.76	
Vmp (V)	21.48	24.01	23.63	22.06	22.06	21.48	21.48	19.97	19.34	17.34	15.39	
Imp (A)	10.41	5.24	5.21	5.26	5.26	5.21	5.21	5.27	5.21	5.23	5.25	
Isc (A)	10.96	5.52	5.48	5.54	5.54	5.48	5.48	5.56	5.48	5.51	5.54	
P (Watt)	220	125	120	115	115	110	110	105	100	90	80	

### TECHNICAL DATA

Solar cells	Multi-wire / Smart-wire Mono-crystalline
Maximum system voltage	600 to 1500 V
Maximum reverse current	20 A
Front sheet	Soil-resistant ETFE-Film
Encapsulation	EVA / POE
Back sheet	High-resistance PET / Fiber Glass
Junction box	IP67/68 with bypass diodes
Cables	2 x 4 mm <sup>2</sup>
Connector	MC4 connector

### THERMAL CHARACTERISSTICS

Operating temperature range	-40°C to 85°C
Temperature coefficient pmp	-0.36%/°C
Temperature coefficient Voc	-0.36%/°C
Temperature coefficient Isc	+0.6%/°C

### APPLICATIONS

- Marine application
- Resistant to Step On (Even Surface)
- Immune to Micro Cracks
- Building Integrated
- Greenhouse Agro PV

### HIGH RELIABILITY\*

UL 61730 | IEC 61215  
IEC UL 61701

### WARRANTY\*

5-year product warranty  
5-year Peak power up to 80% performance warranty



KOSOL ENERGIE 445 Hotel Cir S, San Diego, CA 92108, USA

Contact us @ +1 619 400 6667

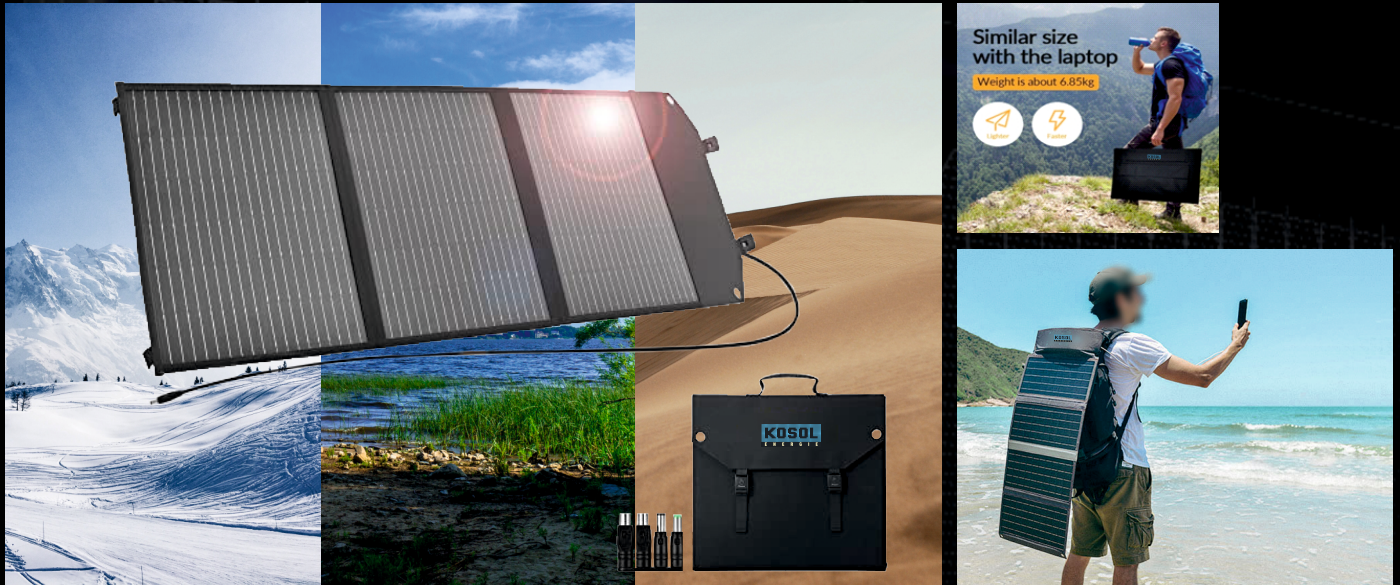
Email: [globalsales@kosol.solar](mailto:globalsales@kosol.solar) | [www.kosol.solar](http://www.kosol.solar)

Warehouse: 46711 FREMONT BLVDFREMONT CA 94538USA

### CAUTION

READ SAFETY AND INSTALLATION MANUAL BEFORE USING THE PRODUCT. Specifications included in this datasheet are subject to change without notice. All electrical data without guarantee. Please confirm your exact requirement with the company representative while placing the order and order confirmation.

# Kosol Foldable Solar Panel



Similar size with the laptop  
Weight is about 6.85kg

## Foldable Module Electrical Data

Rated Power	30W	50W	70W	100W	140W	200W	250W	300W	350W	400W
Convert Efficiency	≥20%	≥20%	≥20%	≥20%	≥20%	≥20%	≥21%	≥21%	≥21%	≥21%
Max. Power Voltage(Vmp(V))	18V	18.2V	18.2V	18.2V	18.2V	18.7V	18.40V	18.4V	18.4V	18.7V
Max. Power Current(Imp(A))	1.64A	2.82A	3.90A	5.52A	7.72A	10.74A	13.58A	16.6A	19.28A	21.40A
Open Circuit Voltage(Voc(V))	21.6V	21.84V	21.84V	21.84V	21.84V	22.44V	22.5V	20.5V	21.84V	22.44V
Short Circuit Current(Isc(A))	1.8A	3.15A	4.38A	6.20A	8.68A	12.08A	14.9A	16.92A	21.69A	24.07A

Kosol foldable solar module can be customised up to 30 Watt to 400 Watt with USB charger & 12V, 24V & 48V compatible with all type of batteries.

## How Does a Foldable Solar Panel Work?

Similar to a normal solar panel, a foldable solar panel transforms the energy from the sun's rays into electricity through a charge controller. This controller is then attached to the device's battery to charge it.

You must ensure that the solar panels face the sunlight and that the sun rays fall directly on the panels. This will help the panels convert the energy appropriately and use it to charge your devices.

Once done, you can fold it up, put it in your bag, and carry it to the next location you're headed to.



Light Weight



Foldable & Portable



Compatible With All Charger



Weather Proof



Fire Resistant



UV Protected

