

KOSOL Flexible Solar Module

Kosol MultiWire / 5 BB technology resistant to step on immune to Microcracks. Low Light performance thin and light weight. The power generation area of a conventional busbar design will be less effective due to cell cracks or breakage.



Higher power output



Multi-Wire/5 BB Solar Cell



Ultra light-weight



Anti-PID Resistance



Higher lifetime power yield



Low temperature coefficient



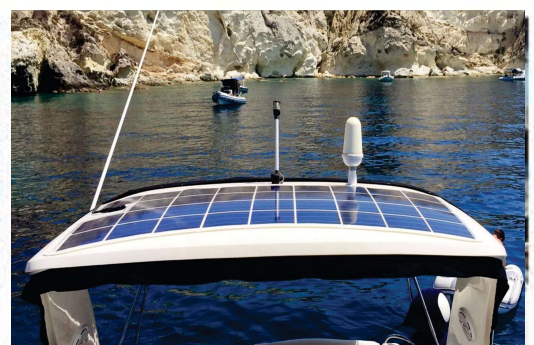
Special customized solutions



Extreme weather conditions



Easily mounted with a number of assembly options



Datasheet

Model	KE420FL	KE415FL	KE410FL	KE405FL	KE400FL	KE385FL	KE380FL	KE375FL	KE370FL	KE350FL	KE345FL	KE340FL
Voc (V)	45.91	45.76	45.34	44.95	44.74	42.09	41.85	41.46	41.06	38.26	38.05	37.57
Vmp (V)	39.94	39.70	39.29	38.88	38.67	36.62	36.28	35.90	35.52	33.29	32.98	32.51
Imp (A)	10.54	10.52	10.49	10.45	10.41	10.54	10.50	10.47	10.44	10.54	10.50	10.46
Isc (A)	11.12	11.09	11.05	11.01	10.96	11.12	11.08	11.03	10.99	11.12	11.08	11.03
P (Watt)	420	415	410	405	400	385	380	375	370	350	345	340
Module Eff (%)	18.65%	18.42%	18.20%	17.98%	17.76%	18.59%	18.34%	18.10%	17.86%	18.46%	18.20%	17.94%
Dimension (mm)	2115 X 1065 X 2	2115 X 1065 X 2	2115 X 1065 X 2	2115 X 1065 X 2	2115 X 1065 X 2	1945 X 1065 X 2	1945 X 1065 X 2	1945 X 1065 X 2	1945 X 1065 X 2	1780 X 1065 X 2	1780 X 1065 X 2	1780 X 1065 X 2
Total No. of Cells	72.00	72.00	72.00	72.00	72.00	66.00	66.00	66.00	66.00	60.00	60.00	60.00

Model	KE335FL	KE330FL	KE315FL	KE310FL	KE305FL	KE300FL	KE255FL	KE250FL	KE245FL	KE235FL	KE230FL	KE225FL
Voc (V)	37.28	37.18	34.44	34.24	33.82	33.55	27.96	27.71	27.34	25.63	25.42	25.05
Vmp (V)	32.23	32.09	29.96	29.68	29.26	29.00	24.26	24.01	23.63	22.35	22.06	21.67
Imp (A)	10.41	10.36	10.54	10.50	10.46	10.41	10.52	10.49	10.41	10.56	10.52	10.46
Isc (A)	10.96	10.91	11.12	11.08	11.03	10.96	11.09	11.05	10.96	11.14	11.09	11.03
P (Watt)	335	330	315	310	305	300	255	250	245	235	230	225
Module Eff (%)	17.67%	17.41%	18.37%	18.08%	17.79%	17.50%	17.96%	17.61%	17.26%	18.09%	17.70%	17.32%
Dimension (mm)	1780 X 1065 X 2	1780 X 1065 X 2	1610 X 1065 X 2	1610 X 1065 X 2	1610 X 1065 X 2	1610 X 1065 X 2	1945 X 730 X 2	1945 X 730 X 2	1945 X 730 X 2	1780 X 730 X 2	1780 X 730 X 2	1780 X 730 X 2
Total No. of Cells	60.00	60.00	54.00	54.00	54.00	54.00	44.00	44.00	44.00	40.00	40.00	40.00

Model	KE220FL	KE125FL	KE120FL	KE115FL	KE115FLS	KE110FL	KE110FLS	KE105FL	KE100FL	KE90FL	KE80FL
Voc (V)	24.85	27.71	27.34	25.42	25.42	24.85	24.85	22.96	22.37	20.04	17.76
Vmp (V)	21.48	24.01	23.63	22.06	22.06	21.48	21.48	19.97	19.34	17.34	15.39
Imp (A)	10.41	5.24	5.21	5.26	5.26	5.21	5.21	5.27	5.21	5.23	5.25
Isc (A)	10.96	5.52	5.48	5.54	5.54	5.48	5.48	5.56	5.48	5.51	5.54
P (Watt)	220	125	120	115	115	110	110	105	100	90	80
Module Eff (%)	16.93%	16.54%	15.88%	16.07%	16.11%	15.86%	15.41%	16.63%	15.84%	15.81%	15.77%
Dimension (mm)	1780 X 730 X 2	1035 X 730 X 2	1035 X 730 X 2	980 X 730 X 2	1830 X 390 X 2	950 X 730 X 2	1830 X 390 X 2	865 X 730 X 2	865 X 730 X 2	780 X 730 X 2	695 X 730 X 2
Total No. of Cells	40	44	44	40	40	40	40	36	36	32	28

TECHNICAL DATA

Solar cells	Multi-wire / Smart-wire Mono-crystalline
Maximum system voltage	600 to 1500 V
Maximum reverse current	20 A
Front sheet	Soil-resistant ETFE-Film
Encapsulation	Patented fiberglass-reinforced plastic / POE
Back sheet	High-resistance PET / TPE
Junction box	IP65/67 with bypass diodes
Cables	2 x 4 mm ²
Connector	MC4 connector

THERMAL CHARACTERISTICS

Operating temperature range	-40°C to 85°C
Temperature coefficient Pmpo	-0.36%/°C
Temperature coefficient Voc	-0.36%/°C
Temperature coefficient Isc	+0.6%/°C

APPLICATIONS

- Marine application
- Resistant to Step On (Even Surface)
- Immune to Micro Cracks
- Building Integrated
- Greenhouse Agro PV

HIGH RELIABILITY

UL 61730 | IEC 61215
IEC UL 61701 Salt mist corrosion Sev 6

WARRANTY

5-year product warranty
5-year Peak power up to 80% performance warranty



Contact us @ +91 99252 99250

Email: info@sunray.co.in | www.kosol.solar | www.sunray.co.in

KOSOL ENERGIE "KALTHIA GROUP" Shivdham Farm, 744, S.G. Highway, B/h Karnavati Club, Ahmedabad-380015, Gujarat - India. Ph.: +91 79 26861339

CAUTION

READ SAFETY AND INSTALLATION MANUAL BEFORE USING THE PRODUCT. Specifications included in this datasheet are subject to change without notice. All electrical data without guarantee. Please confirm your exact requirement with the company representative while placing the order and order confirmation.